

PART OF N.E. 1/4 OF SEC. 22 T.5 N., R. 1 W., S.L.B. & M.

176

MEADOWS PROFESSIONAL PLAZA CONDOMINIUM

TAXING UNIT 75

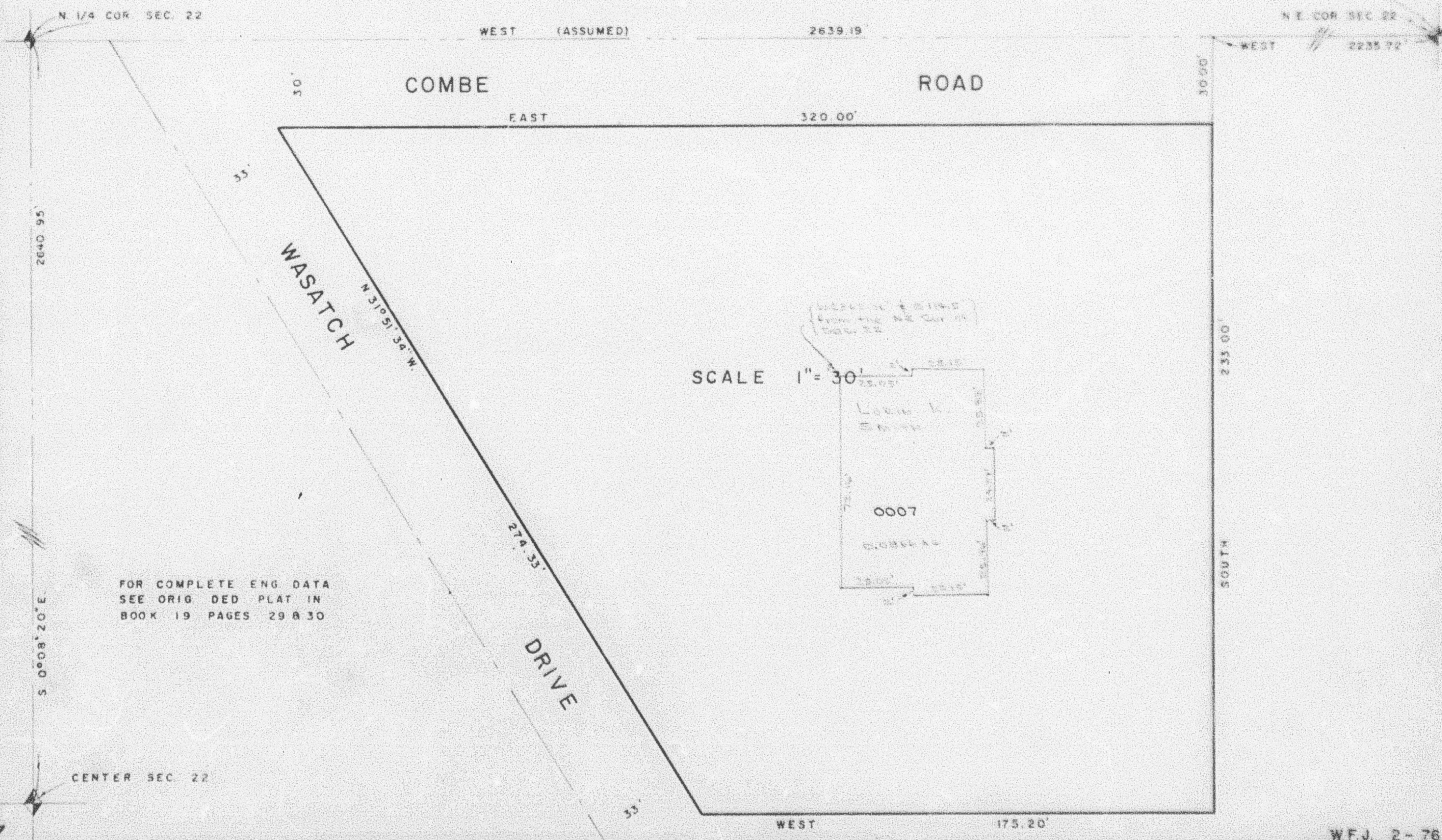
IN SOUTH OGDEN CITY

PREFIX 07-176

SURVEY PLAT: BOOK 19 OF DEDICATION PLAT, PAGES 29 & 30
 DECLARATION: BOOK 113 OF RECORDS, PAGE 863

NOTE EACH UNIT INCLUDES 1/6 PERCENTAGE OF OWNERSHIP IN THE COMMON AREA

SUITE	SERIAL NO.	NAMES OF OWNERSHIPS
A	0001	L. S. CURTIS INVESTMENT CO.
B	0002	CHRISTOPHER NIELSEN & DANIELA W. NIELSEN
C	0003	SHARON L. DAINES & NANCY L. DAINES
D	0004	OSCAR S. ROSENTHAL & CAROL M.
E	0005	JANE R. QUINN
F	0006	MARILYN H. TRIMMER & ROBERT S.



FOR COMPLETE ENG. DATA
 SEE ORIG. DED. PLAT IN
 BOOK 19 PAGES 29 & 30

SCALE 1" = 30'

